



ALPEN

HIGH PERFORMANCE PRODUCTS

Tyrol Series TR-6



Tyrol Series TR-6 Windows and Doors

The European-styled Tyrol Series™ of windows and doors, from Alpen High Performance Products, is a fiberglass reinforced polymer window system that doesn't rely on steel for its strength. Instead, it is composed of a proprietary fiber composite material similar to those employed in aeronautic construction and racing vehicles for outstanding strength and load capacities.

In the hands of our experienced development partner, REHAU®, this unique material was transformed into an extremely strong polymer profile that substantially improves thermal insulation.

With a high performance-to-price ratio, the TR-6 line is perfect for a wide range of residential, commercial and multifamily application.

Benefits:

- NFRC whole-window ratings up to R-6.7 (U-0.15)
- Center-of-glass performances from R-7.1 (U-0.14) to R-8.3 (U-0.12)
- Based on the award winning Rehau 4700 Geneo profile
- Full range of glazing options for maximum energy savings and comfort
- Fiberglass-reinforced profile allows for larger sizes without steel reinforcement



TECHNICAL SPECIFICATIONS



Tyrol Series TR-6 Full Frame NFRC Thermal Performance:

TR-6 (Standard Foam)	Description			NFRC Full-Frame / Total Unit Performance			
	Glass Package	Use	Makeup	U-factor	R-value	SHGC	VT
Fixed	Balanced-6	Low U-factor High Visible Light	Triple Pane with Suspended Film, Argon Gas Fill	0.15	6.7	0.27	0.44
	SolarControl-6	Lowest Solar Heat Gain Coefficient	Triple Pane with Suspended Film, Argon Gas Fill	0.16	6.3	0.19	0.45
	HighGain-6	Maximum Passive Gain and Daylight	Triple Pane with Suspended Film, Argon Gas Fill	0.17	5.9	0.41	0.55
Tilt Turn/ Hopper	Balanced-6	Low U-factor High Visible Light	Triple Pane with Suspended Film, Argon Gas Fill	0.17	5.9	0.24	0.38
	SolarControl-6	Lowest Solar Heat Gain Coefficient	Triple Pane with Suspended Film, Argon Gas Fill	0.17	5.9	0.17	0.39
	HighGain-6	Maximum Passive Gain and Daylight	Triple Pane with Suspended Film, Argon Gas Fill	0.18	5.6	0.35	0.48

DESIGNING WITH ALPENGLASS:

Alpenglass <i>Balanced</i>	Optimal blend of low U-factor and moderate solar control, a well-rounded solution for high performance homes in all climates
Alpenglass <i>SolarControl</i>	Extra protection against unwanted solar gain to keep spaces cool in summer and swing seasons, ideal for West- and South-facing windows in most climates
Alpenglass <i>HighGain</i>	Maximum light and solar heat gain, ideal for passive solar homes and North-facing and well-shaded windows in spaces where more daylight is desired

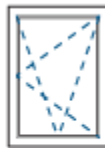
WINDOW AND DOOR TYPES



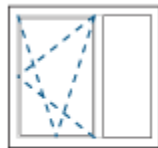
Fixed Window



Hopper Window

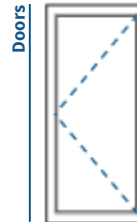


Tilt Turn/
Hopper Window

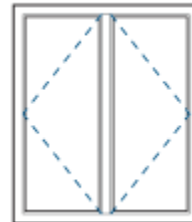


Combination Units

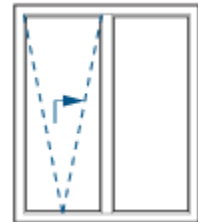
Windows



Side-Hinged Doors



French Doors



2-Panel
Tilt Glide Doors

Doors

FINISH OPTIONS

Standard Color

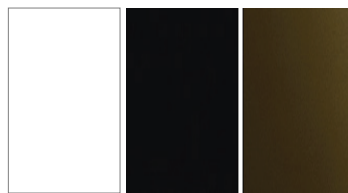
White

Upgrade Color Options

Black or Bronze

Custom Finishes

Please call to inquire about the availability of custom laminated foil and painted finishes.

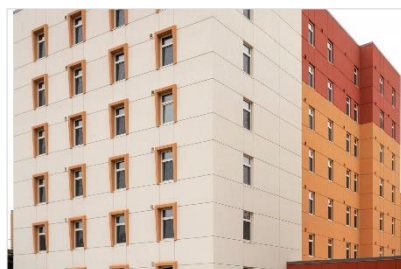


Hardware

German-engineered Roto® NT window handles are available in the following standard finishes: White, Black, Dark Bronze and Nickel Silver

Please call to inquire about the availability of custom handle finishes.

TYROL SERIES IMAGES



Acoustic Insulation

ASTM E90 Acoustical
Up to 45 dB