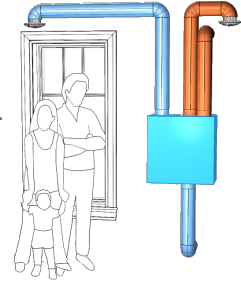


**UltimateAir Recommended Ventilation Ducting Kit**  
for the **ER80M ERV**



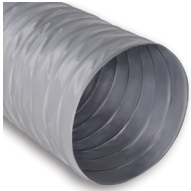
**Adjustable Vents 4" Qty 6**



**Wye Connectors 5x5x5 inch Qty 1**  
**5x4x4 inch Qty 3**



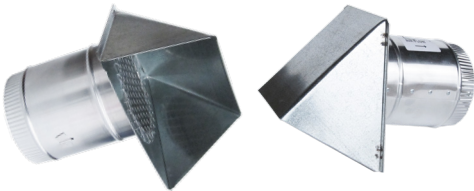
**Flexible Duct, Gray 4"X 50'**  
**5"X 25'**



**Insulated Flexible Air Duct**  
R4.2, Silver 5"X 25'

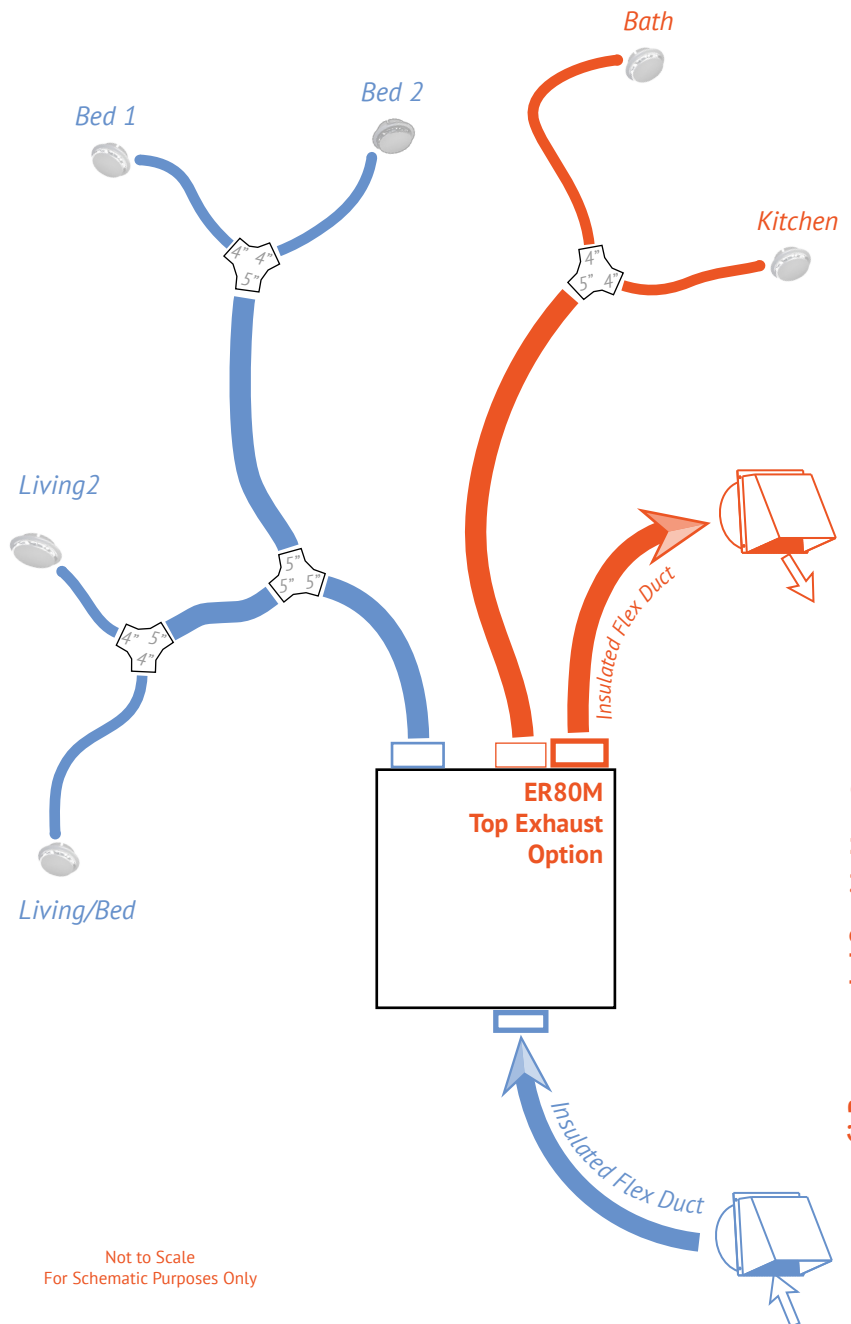


**Exterior Hood Kit 5" Qty 2**



**Tie Wraps Qty 10**

**Mastic Tape Qty 2**





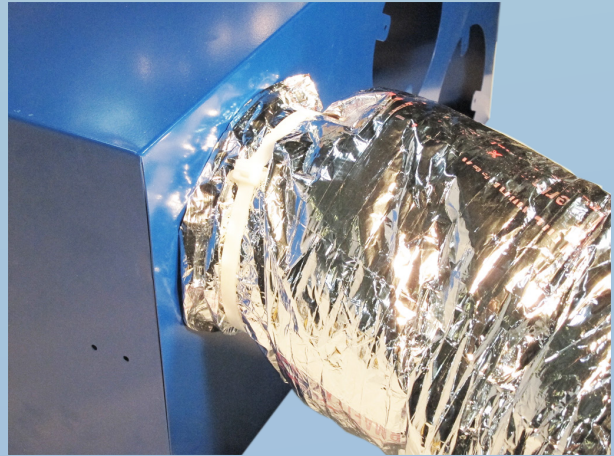
**1. Attach Starter Collar to Ventilation Unit by Bending Tabs & Secure With Self Drilling Tek Screws**



**2. Use Mastic Putty to Seal Collar to Ventilation Unit**



**3. Tape Inner Duct to Collar**



**4. Tie Insulated Sleeve to Collar**

